



Jabra PRO™ 9465 DUO Jabra PRO™ 9470

Quick Start Guide

www.jabra.com

STEP 1: CHOOSE YOUR WEARING STYLE (ONLY FOR 9470)

FR: Étape 1 : Choisissez votre type de port (uniquement pour le 9470) / **DE:** Schritt 1: Auswahl der Trageform (nur beim 9470) /

ES: Paso 1: Elija cómo llevarlo (solo para el 9470) / **CHT:** 步驟 1 : 選擇佩戴方式 (僅限 9470)

For 9465 duo skip to step 2

FR: Pour 9465 duo passez à l'étape 2 / **DE:** Bei 9465 duo weiter mit schritt 2 / **ES:** Para 9465 duo, vaya al paso 2 / **CHT:** 至於 9465 DUO · 跳至步驟 2 。

OPTION A

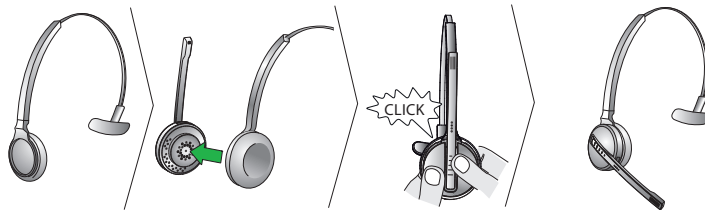
Headband attachment

FR: Option A: Serre-tête

DE: Option A: Befestigung des Überkopfbügels

ES: Opción A: Diadema para la cabeza

CHT: 選項 A: 頭帶附件



OPTION B

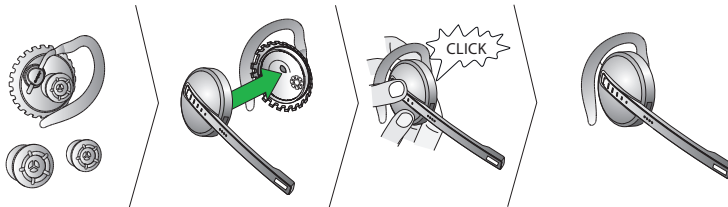
Earhook attachment

FR: Option B: Fixation du contour d'oreille

DE: Option B: Befestigung des Ohrbügels

ES: Opción B: Gancho para la oreja

CHT: 選項 B 耳勾附件



OPTION C

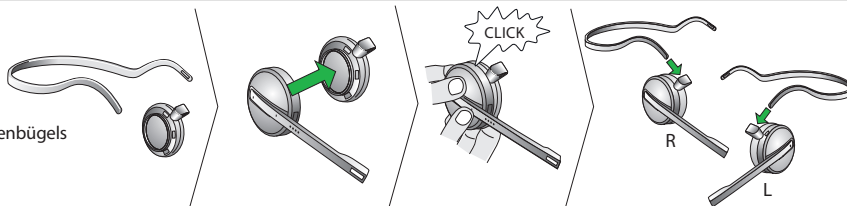
Neckband attachment

FR: Option C: Tour de cou

DE: Option C: Befestigung des Nackenbügels

ES: Opción C: Diadema para el cuello

CHT: 選項 C: 掛繩附件

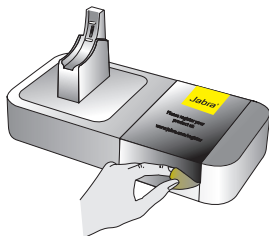


STEP 2: CONNECT TO POWER

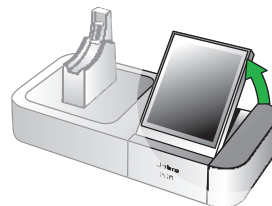
FR: Étape 2: Raccordement au secteur / **DE:** Schritt 2: Anschliessen an die Stromversorgung /

ES: Paso 2: Conexión a la red eléctrica / **CHT:** 步驟 2 : 連接至電源

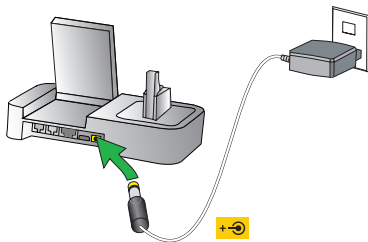
1



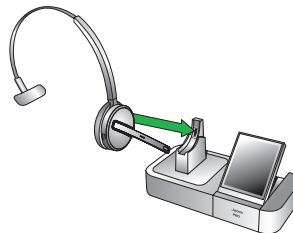
2



3



4



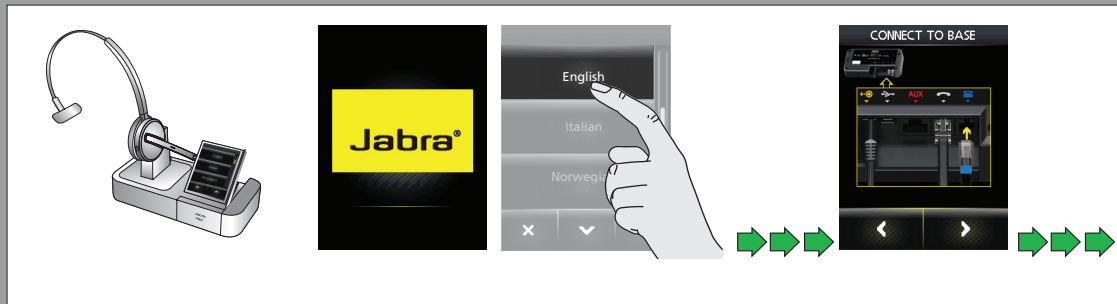
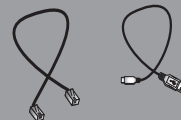
STEP 3: CABLE SETUP (FOLLOW GUIDE ON TOUCHSCREEN)

FR: Étape 3 : Configuration de câble (suivre le guide sur l'écran tactile)

DE: Schritt 3: Verkabelung (folgen sie den Anweisungen auf dem Touchscreen)

ES: Paso 3: Configuración del cable (siga las instrucciones de la pantalla táctil)

CHT: 步驟 3 : 纜線設定 (依照輕觸屏上的指南操作)



GET STARTED

WWW.JABRA.COM/SETUP

GO TO WWW.JABRA.COM/SETUP FOR MORE HELP AND USER MANUAL

FR: VISITEZ LE SITE WWW.JABRA.COM/SETUP POUR AIDE SUPPLÉMENTAIRE ET MODE D'EMPLOI

DE: UNTER WWW.JABRA.COM/SETUP ERHALTEN SIE WEITERE UNTERSTÜTZUNG. DORT FINDEN SIE AUCH DIE BEDIENUNGSANLEITUNG VOR

ES: VAYA A WWW.JABRA.COM/SETUP PARA CONSULTAR MÁS AYUDA Y VER EL MANUAL DE USUARIO

CHT: 有關更多說明和使用者手冊，請造訪 WWW.JABRA.COM/SETUP



www.jabra.com/setup

HOW TO MAKE A CALL

FR: Comment effectuer un appel / DE: Einen Anruf tätigen /

ES: Cómo realizar una llamada / CHT: 如何撥打電話



Option 1: Softphone

FR: Option 1: Logiciel de téléphonie

DE: Option 1: Softphone

ES: Opción 1: Softphone

CHT: 選項 1: 軟體式電話



Option 2: Mobile phone

FR: Option 2: Téléphone portable

DE: Option 2: Mobiltelefon

ES: Opción 2: Teléfono móvil

CHT: 選項 2: 手提電話



Option 3: Desk phone with headset port

FR: Option 3: Téléphone fixe avec port du micro-casque

DE: Option 3: Tischtelefon mit headsetanschluss

ES: Opción 3: Teléfono con puerto para auricular

CHT: 選項 3: 帶耳機插孔的座檯電話



Option 4: Desk phone without headset port

FR: Option 4: Téléphone fixe sans port du micro-casque

DE: Option 4: Tischtelefon ohne Headsetanschluss

ES: Opción 4: Teléfono de escritorio sin puerto para auricular

CHT: 選項 4: 不帶耳機插孔的座檯電話



Option 5: Desk phone with GN1000 or electronic hookswitch

FR: Option 5: Téléphone fixe avec GN1000 ou hookswitch électronique

DE: Option 5: Tischtelefon mit GN1000-Hörer-Lifter oder elektronischer Rufannahme

ES: Opción 5: Teléfono de escritorio con conmutador de gancho electrónico o GN1000

CHT: 選項 5: 帶 GN1000 或電子收線開關的座檯電話



HEADSET AND TOUCHSCREEN INFORMATION

FR: Informations sur le micro-casque et l'écran tactile / **DE:** Headset- und Touchscreen Informationen / **ES:** Información sobre el auricular y la pantalla táctil / **CHT:** 耳機及輕觸屏資訊



Battery status

FR: État de la batterie
DE: Akkustatus
ES: Estado de la batería
CHT: 電池狀態



Headset docked

FR: Oreillette sur le socle
DE: Headset ist im Ladeschacht
ES: Teléfono en la base
CHT: 耳機已泊入耳機座



Audio link between headset and base

FR: Liaison audio entre le micro-casque et la base
DE: Audioverbindung zwischen Headset und Basisstation
ES: Conexión de audio entre el auricular y la base
CHT: 耳機與基座之間的音頻連結



Change settings

FR: Modification des paramètres
DE: Einstellungen ändern
ES: Cambiar configuración
CHT: 變更設定



Change target phone

FR: Modification du téléphone cible
DE: Zieltelefon ändern
ES: Cambiar teléfono designado
CHT: 變更目標電話



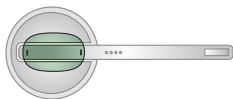
Answer/end calls (tap)

FR: Répondre/mettre fin aux appels (appui)
DE: Anrufe annehmen/beenden (tippen)
ES: Responder/finalizar llamadas (pulsar una vez)
CHT: 接聽/結束通話 (輕按)



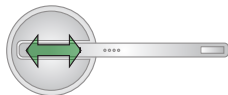
Mute/un-mute (double-tap)

FR: Activer/désactiver le mode Secret (double appui)
DE: Stummuschaltung aktivieren/deaktivieren (zweimal tippen)
ES: Activar/desactivar el modo de silencio (pulsar dos veces)
CHT: 靜音/取消靜音 (輕按兩下)



Volume up/down (slide)

FR: Commande de volume (faire glisser son doigt)
DE: Lautstärkeregelung (ziehen)
ES: Subir/bajar volumen (deslizar)
CHT: 調高/降低音量 (滑動)

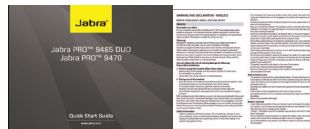
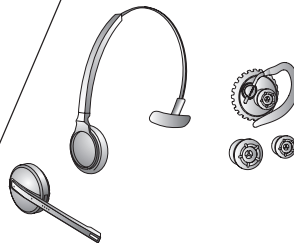
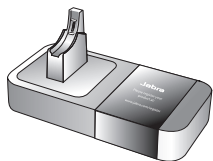


PACKAGE CONTENTS

FR: Contenu de l'emballage / DE: Packungsinhalt / ES: Contenido de la caja / CHT: 包裝盒內容

Jabra PRO 9465 DUO

Jabra PRO 9470



CUSTOMER SUPPORT

FR: Assistance clientèle / **DE:** Kundenbetreuung / **ES:** Atención al cliente / **CHT:** 客戶支援

EUROPE

Belgique/Belgium + 49 (0)8031 2651 72
Czech Republic + 420 800 522 722
Denmark Kontakt venligst din
nærmeste forhandler (via
følgende link)
www.jabra.dk/forhandler
Deutschland + 49 (0)8031 2651 72
España + 34 916 398 064
France + 33 (0) 130 589 075
Italia + 39 02 5832 8253
Luxembourg + 49 (0)8031 2651 72
Nederland + 49 (0)8031 2651 72
Norge + 47 32 22 74 70
Österreich + 49 (0)8031 2651 72
Poland 0-801-800-550;
+ 48 12 254-40-15
Russia techsupport.ru@jabra.com
Suomi + 358 204 85 6040
Sverige + 46 (0)8 693 09 00
United Kingdom + 44 (0)1784 220 172

ASIA

Australia 1-800-636-086 (local
distributor)
China + 86-21-5836 5067
Hong Kong 800-968-265 (Toll free)
India 000-800-852-1185 (Toll free)
Indonesia 001-803-852-7664
Japan + 81-3-5297-7976
Malaysia 1800-812-160 (Toll free)
New Zealand 0800-447-982 (Toll free)
Philippines 1800-765-7022 (ETPI)
1800-1855-0144 (PLDT)
800-8523-794 -(Toll free)
Singapore 0080-186-3013 (Toll free)
Taiwan 001-8008523-794 (Toll free)
Thailand

MIDDLE EAST/AFRICA

E-mail Support: support.mea@gn.com

USA & CANADA

Canada 1-800-489-4199
USA 1-800-826-4656

For further languages please refer to the manuals
on the enclosed CD.

EUROPE:

EN/FR/DE/IT/NL/ES/DA/SE/NO/FI/PT/RU/TR/CZ/HU

USA & CANADA:

US/FR/ES/PT

ASIA:

EN/CHT

A BRAND BY



GN Netcom A/S
Lautrupbjerg 7
DK-2750 Ballerup
Denmark

© 2012 GN Netcom A/S. All rights reserved. Jabra® is a registered trademark
of GN Netcom A/S. All other trademarks included herein are the property
of their respective owners. The Bluetooth® word mark and logos are owned
by the Bluetooth SIG, Inc. and any use of such marks by GN Netcom A/S is
under license. (Design and specifications subject to change without notice).

MADE IN CHINA
TYPE: 9400HS/BS



PATENTS AND DESIGN REGISTRATION PENDING INTERNATIONAL

REGISTER YOUR JABRA AT JABRA.COM/REGISTER - FOR NEWS, SUPPORT AND COMPETITIONS

www.jabra.com